

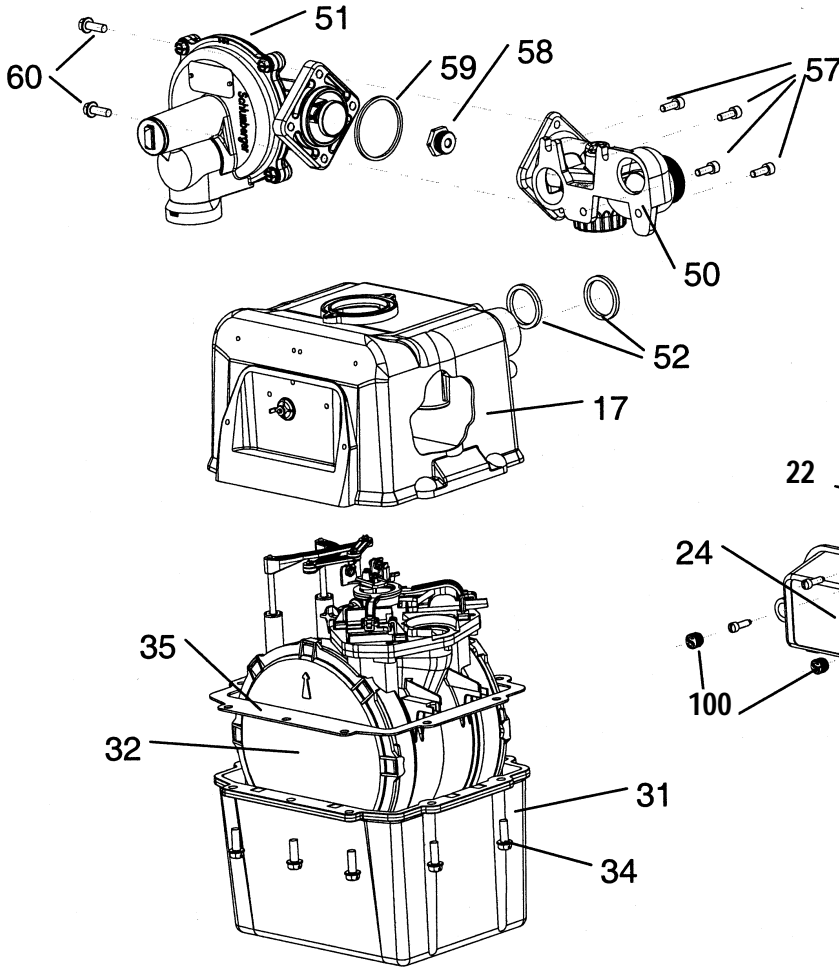
METRIS® Parts List

Effective March 2002

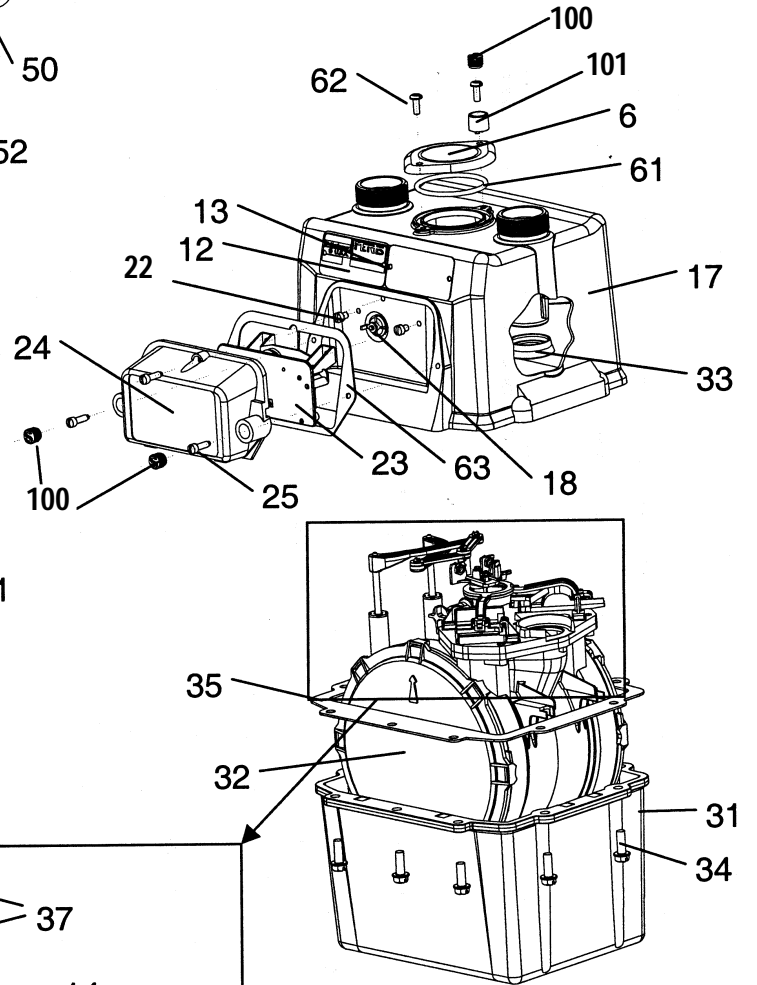


METRIS Reference Schematics

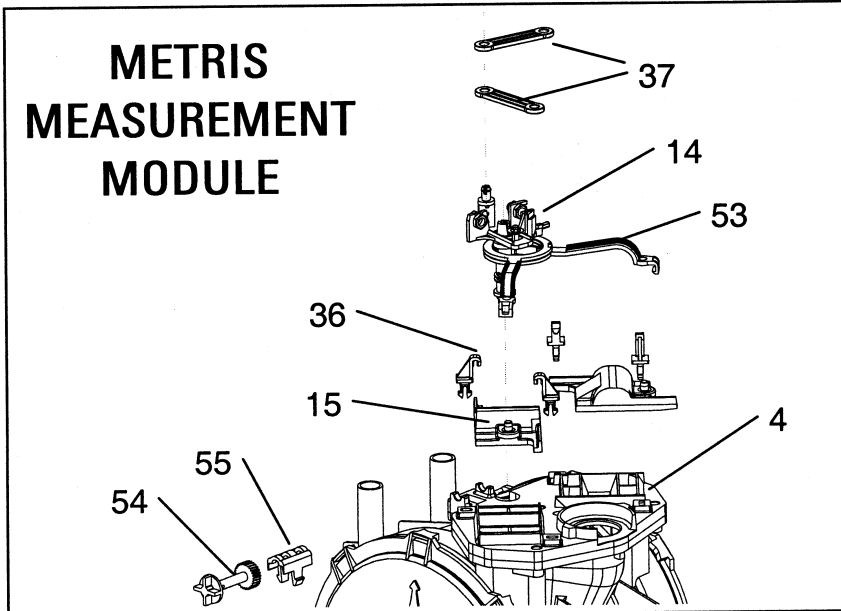
METRIS RM/MB



METRIS 250



METRIS MEASUREMENT MODULE



METRIS Assembly

Item No.	Part No.	Quantity			Description
		6"	RM	MB	
4	091042	1	1	1	Valve Seat
5	091043	1	1		Valve Seat Screw
6	091006	1	1	1	Handhole Cover
12	Call	1	1	1	Manufacturing Badge
	017034	1	1	1	Customer Badge (Blank)
13	80004401	4	4	4	Drive Stud
14		1	1	1	Tangent Crank Assembly
	091274				NTC ft ³ (shown)
	091275				TC ft ³
	091276				NTC m ³ with Reverse Stop
	091281				NTC m ³
	091282				TC m ³
15	091040	1	1	1	Valve Cover - Rear
	091041	1	1	1	Valve Cover - Front
17		1	1	1	Upper Case Assembly
	091371				6" - #1 SPG Standard
	091374				6" - 10 LT
	091373				6" - 20 LT
	091372				6" - 30 LT
	091375				6" - 1-1/4" (1" Pittsburgh)
	091389				6" - 1-1/4" (ISO G)
	091302				Meter Bank/RM
18	091340	1	1	1	IDM Assembly
22	010730	2	2	2	Index Mounting Screws
23		1	1	1	Index
	017312				4 Circle, Plst - ft ³ - NTC
	017316				4 Circle, Plst - ft ³ - TC
	017322				4 Digit, Plst - ft ³ - NTC
	017324				4 Digit, Plst - ft ³ - TC
	017321				5 Digit, Plst - ft ³ - NTC
	017323				5 Digit, Plst - ft ³ - TC
	017325				5 Digit, Plst - m ³ - NTC
	017326				5 Digit, Plst - m ³ - TC
	017289				2 PSI PC, 4 Circle, ft ³ NTC
	018207				14" wc PC, 4 Circle ft ³ NTC
24	016603	1	1	1	Index Cover
25	010625	3	3	3	Index Cover Screws
31	091334	1	1	1	Bottom Case
32		1	1	1	Module Assembly
	091201				NTC ft ³ (shown)
	091205				NTC m ³
	091203				TC ft ³
	091207				TC m ³
	091206				NTC m ³ with RS

Item No.	Part No.	Quantity			Description
		6"	RM	MB	
33	091054	1	1	1	Outlet Seal
34	010323	10	10	10	Case Screw
35	091325	1	1	1	Case Gasket
36	091044	4	4	4	Valve Cover Guide
37	091025	2	2	2	Flag Arm Link
50			1	1	RM Manifold Assembly
	091221				3/4" Inlet - #1 SPG Std.
	091223				3/4" Inlet - 10 LT
	091225				3/4" Inlet - 20 LT
	091231				1" Inlet - #1 SPG Std.
	091232				1" Inlet - 10 LT
	091233				1" Inlet - 20 LT
51			1		B42R Regulator w/7" Relief
	R00001				1" Vent - Green
	R00002				1" Vent - Brown
	R00003				1" Vent - Blue
	R00004				1" Vent - Silver
	R00005				1" Vent - Yellow/Black
	R00006				3/4" Vent - Green
	R00007				3/4" Vent - Brown
	R00008				3/4" Vent - Blue
	R00009				3/4" Vent - Silver
	R00010				3/4" Vent - Yellow/Black
52	091421		2	2	Manifold Seals
53	091062	2	2	2	Valve Link
54		1	1	1	Index Drive Gear
	091045				Cubic Feet- ft ³
	091135				Metric - m ³
55	091053	1	1	1	Index Drive Gear Clip
56	017162			1	MB Sealing Plate
57	091103		4	4	Manifold Screws
58			1		Orifice
59	765605		1	1	MB Plate/Regulator Seal
60	755304		2	2	Retainer Plate Screws
61	091007	1	1	1	Handhole Cover Seal
62	091096	2	2	2	Handhole Cover Screws
63	010571	1	1	1	Index Cover Gasket
100	017167	2	2	2	Index Cover Seals
101	091061	1	1	1	Handhole Security Cup Seal
Special Tools					
	799051				Regulator Adjustment Wrench
	799015				Orifice Wrench

METRIS Assembly (continued)

Torque Requirements		
Item No.	Part No.	Description
30	010323	Case Screw; 45-50 in lbs.
22	010730	Index Mounting Screw; 15 in. lbs.
25	010625	Index Cover Screw; 15 in lbs.
62	091096	Handhole Cover Screw; 30-35 in. lbs.
57	091103	Manifold Screw; 80-90 in. lbs.
60	755304	Retainer Plate Screw; 50-60 in. lbs.
58	ALL	Orifice; 400-600 in. lbs

Actaris U.S. Gas, Inc.
970 Highway 127 North
Owenton, KY 40359-9302
Tel: 502-484-5747
Fax: 502-484-5840
www.actarismusgas.com



GA-0022-GB-02.02